

WAFRA LIVING

The design for the **WAFRA LIVING COMPLEX**, consists of a **high rise building** set back from the street and an L-shaped building defining the street edge, **conceived to maximize privacy within the community, whilst providing ample natural light and usable indoor and outdoor common spaces**. Cuts have been made in the front building in order to provide better views for the lower floor apartments in the back tower.

The proposal combines at different levels **domestic and collective scales, private and public**, within the complex, whilst at the same time traces the way to merge in the neighborhood by offering part of the ground floor level (where the pedestrian and car access are) to community life through the **retail facilities included**.

At **Level 1** a **“High Square”**, a **community space for the tenants** is created to enjoy sports or any other leisure activities in a more private environment.

A **“veil”** climbs the façade as an **occupiable layer** that conceals the various service spaces within the apartments that do not directly relate to the public. It also hosts the fire escape stairs, separated away from the cores to be placed in this secondary circulation layer that faces the inner courtyard of the complex.



Awards Received
- A'Design Awards 2012 / BRONZE award
- MIPIM AR 2012 / COMMENDED
- WAF 2011 / Category WINNER
- IPA 2011 / 5 STARS AWARDS

THE TEAM



AGI architects is an international design firm providing comprehensive services in Architecture, Planning, Urban Design, Interior Design Research and Consulting. An integration of skills allows the creation of places that provide lasting value for clients through distinctive and imaginative solutions.

AGI architects was established in 2006 by Joaquin Perez-Goicoechea and Nasser B. Abulhasan.

AGI architects has introduced exceptional design, management and technical approaches to its projects in Europe and the Middle East from its offices in the cities of Madrid and Kuwait city.

With a multidisciplinary staff of over 40 professionals including architects, planners, landscape architects, interior designers and other specialists, individual members of the design team can be carefully selected to reflect the necessary skills for the scope and scale of the project. Great emphasis is placed on continuity so that work is client driven rather than project centred. Clients work with architects they know and over time, the team is able to develop a thorough understanding of the clients' business objectives and priorities and is able to make more effective contributions to their projects.

Kuwait Argan Business Park, Block C, Kuwait Free Trade Zone, Shuwaikh (Block F25 - F41). P.O. Box 24066, Safat 13101, Kuwait.

T. (+965) 22230109
F. (+965) 22230110

www.agi-architects.com
info@agi-architects.com



Wafra Real Estate (WRE) is a leading real estate investment and development player in The State of Kuwait. Pioneering the market, it introduced the concept of a specialized real estate company to the Kuwaiti and regional markets.

Since its inception in 1984, WRE has implemented a balanced investment strategy aiming to achieve profit while following stringent guidelines of hedging and risk management for its investments and projects. Such a strategy enabled WRE to maintain satisfying growth rates in its returns, investments, and assets under management, and shielded the company from the many market crises and cycles, such as: Souq Al Manakh crisis, the Gulf Wars, and the 2008 global financial crisis.

WRE enjoys major competitive advantages comprised of its stability, solid strategic relations with the different economic sectors in The

P.O. Box 858, Safat
13009, Kuwait

T. (+965) 1841114
F. (+965) 22404896

www.wafra.com.kw
info@wafra.com.kw

State of Kuwait, its high net worth position, management experience, and a qualified human resources team offering a wide array of integrated real estate services including design, development, operating, management, and maintenance.

In 2011, WRE unveiled its new identity reflecting the new generation of its projects, vision, strategies, and objectives. Through this new identity, WRE once again proved its dynamic, ambitious, and flexible business model, as well as its ability to meet market changes.

WREC continuously strives to sustain a distinguished name in the real estate development and investment industry in Kuwait and the region, by developing world class projects while preserving the local essence and meeting the community's needs. However, the level of risk remains the most essential factor driving the company's investment decisions.

Photography By: Mohammad Taqi Ashkanani

THE AMENITIES

58,000 M²

OF RESIDENTIAL, RETAIL & RECREATIONAL SPACES

126 APARTMENTS

- FULLY EQUIPPED KITCHENS & APPLIANCES
- LAUNDRY UNITS
- DEDICATED MAILBOX WITH INTERCOM SYSTEM
- CONCIERGE SERVICE

265 PARKING SPACES

- CAR PARK ACCESS SYSTEM
- CAR WASH SERVICE

WELLNESS

- 6 GARDEN TERRACES
- 2 SWIMMING POOLS
 - CHANGING ROOMS
 - TOILETS
- 2 FULLY EQUIPPED GYMS
- SQUASH COURT

SOCIAL

- LOUNGE
- MULTI-PURPOSE HALL
 - EQUIPPED KITCHENETTE
 - TOILETS
- CHILDREN PLAYROOM

TECHNOLOGY

- HIGH-SPEED WIFI ACCESS SYSTEM
- SMART-PHONE CONTROLLED THERMOSTAT
- BUILDING MANAGEMENT SYSTEM(BMS)
- GARBAGE CHUTE SYSTEM
- IP TEL/DATA/TV SYSTEM

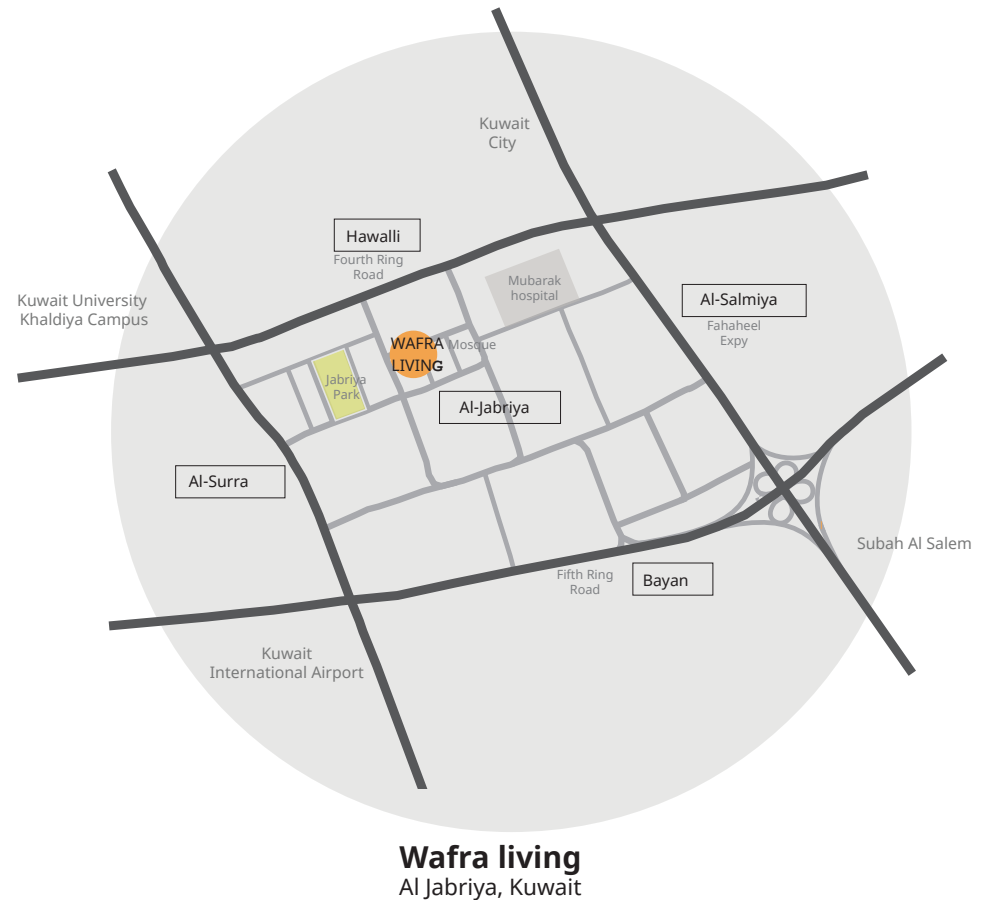
SECURITY

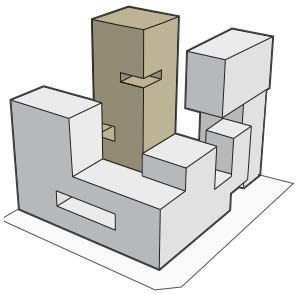
- ACCESS CONTROL SYSTEM
- CCTV SECURITY CAMERAS
- IP INTERCOM SYSTEM

LOCATION

Jabriya is surrounded by the residential areas of **Surra** and **Bayan** to the south and west, and mixed-use areas of **Hawalli** and **Salmiya** to the north and east. It has multiple access points including the **fourth** and **fifth ring roads**, Al Fahaheel highway, and Al Maghrib highway. Influenced by its variegated surrounding areas, Jabriya in the recent years has transformed from being a **single family** residential district and expanding to incorporate a **mix-use** of commercial, healthcare, educational and medium and high-rise residential facilities, resulting in overcrowded areas. It contains approximately **18 schools** (both public and private), more than **15 foreign embassies**, **Mubarak Al Kabeer Hospital**, and other medical organizations such as the **Kuwait Medical associations** and the **Kuwait Central Blood Bank**.

The **Wafra Living** site, located in **Jabriya**, is surrounded by residential buildings and commercial facilities. The proposed design for the Wafra Living complex, which consists of a **high rise** building set back from the street and an **L-shaped** building defining the street edge, is conceived as a new type of **Landmark**.





BLOCK E

APARTMENTS

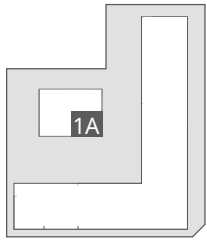


APARTMENT TYPE 1A | THREE BEDROOM APARTMENT

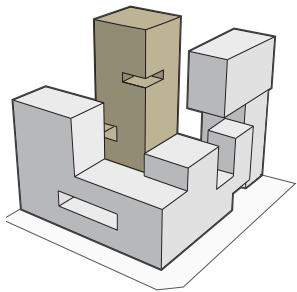


APARTMENT LOCATION:
BLOCK: E
LEVELS: 3&7-14 & 18-20

APARTMENT FEATURES
-ENTRANCES: 1
-NO. BEDROOMS: 3
-NO. TOILETS: 3
-NO.STAFF ROOMS: 1
-NO.STAFF TOILETS: 1
-NO.PARKING SPOTS: 2
-NO. OF AVAILABLE UNITS: 12



North



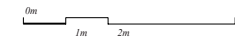
MASTER BEDROOM 01	16.0 M ²
MASTER TOILET	6.8 M ²
BEDROOM 01	18.5 M ²
BEDROOM 02	14.4 M ²
TOILET	4.6 M ²
LIVING / DINING	33.6 M ²
LOBBY	7.8 M ²
GUEST TOILET	2.2 M ²
CORRIDORS	5.6 M ²

TOTAL FAMILY AREA
109.5 M²

MAID'S ROOM	6.8 M ²
MAID'S TOILET	2.85 M ²
CORRIDOR	4.0 M ²
KITCHEN / LAUNDRY	7.25 M ²

TOTAL STAFF AREA
20.9 M²

TOTAL GROSS AREA
150 M²



Disclaimer: 1. All room dimensions are measured to structural elements and include wall finishes and construction tolerances. 2. All dimensions have been provided by our consultant architects. 3. All materials, dimensions, and drawings are approximate. Information is subject to change without notice. 4. Actual apartment area may vary from the stated area. Drawings not to scale. The developers reserve the right to make revisions. 6. Calculation of balcony area is measured as the area bounded by the finish to finish demising or partition walls separating one unit from another unit, the outmost face of the enclosing guard and the external face of the unit adjoining the balcony. 7. The units are measured at typical floor in the building. Columns may vary in size depending on the floor level.

APARTMENT TYPE 1B | THREE BEDROOM APARTMENT



APARTMENT LOCATION:
BLOCK: E
LEVELS: 3-6 & 11-20

APARTMENT FEATURES
-ENTRANCES: 1
-NO. BEDROOMS: 3
-NO. TOILETS: 3
-NO.STAFF ROOMS: 1
-NO.STAFF TOILETS: 1
-NO.PARKING SPOTS: 2
-NO. OF AVAILABLE UNITS: 14



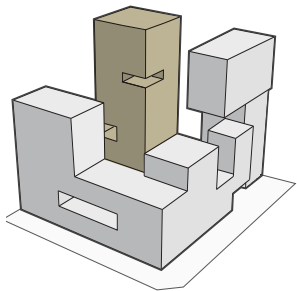
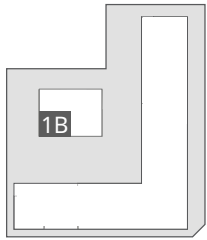
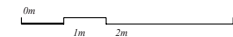
MASTER BEDROOM 01	-----	16.4 M ²
MASTER TOILET	-----	6.4 M ²
BEDROOM 01	-----	13.3 M ²
BEDROOM 02	-----	18.5 M ²
TOILET	-----	3.7 M ²
LIVING / DINING	-----	33.6 M ²
LOBBY	-----	8.4 M ²
GUEST TOILET	-----	2.2 M ²
CORRIDOR	-----	4 M ²

TOTAL FAMILY AREA
106.5 M²

MAID'S ROOM	-----	6.8 M ²
MAID'S TOILET	-----	2.8 M ²
CORRIDOR	-----	4.0 M ²
KITCHEN / LAUNDRY	-----	6.7 M ²

TOTAL STAFF AREA
19.6 M²

TOTAL GROSS AREA
150 M²



Disclaimer: 1. All room dimensions are measured to structural elements and include wall finishes and construction tolerances. 2. All dimensions have been provided by our consultant architects. 3. All materials, dimensions, and drawings are approximate. Information is subject to change without notice. 4. Actual apartment area may vary from the stated area. Drawings not to scale. The developers reserve the right to make revisions. 6. Calculation of balcony area is measured as the area bounded by the finish to finish demising or partition walls separating one unit from another unit, the outmost face of the enclosing guard and the external face of the unit adjoining the balcony. 7. The units are measured at typical floor in the building. Columns may vary in size depending on the floor level.

APARTMENT TYPE 2 | TWO BEDROOM APARTMENT

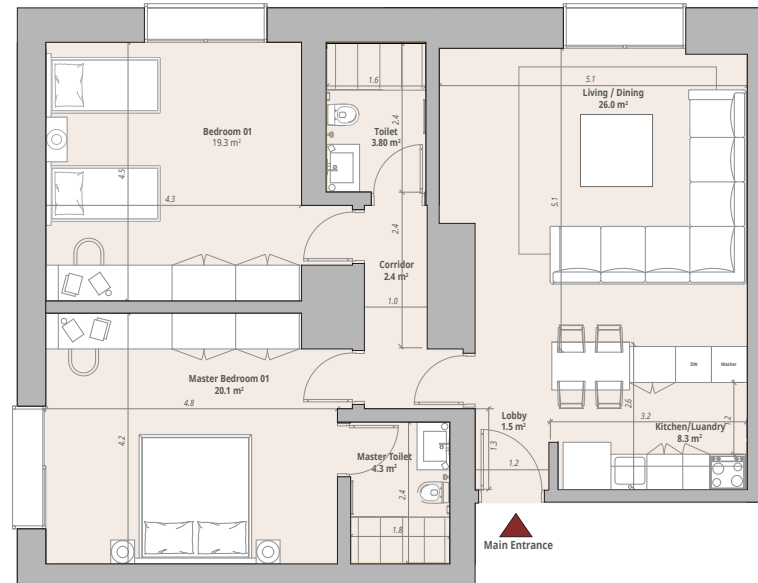
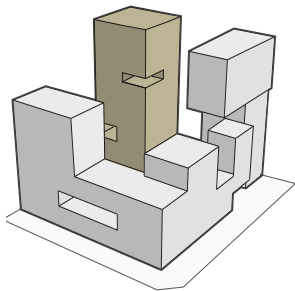
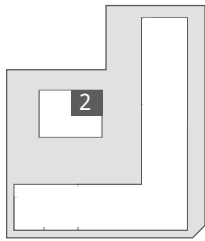


APARTMENT LOCATION:

BLOCK: E
LEVELS: 4-20

APARTMENT FEATURES

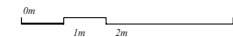
- ENTRANCES: 1
- NO. BEDROOMS: 2
- NO. TOILETS: 2
- NO. PARKING SPOTS: 1
- NO. OF AVAILABLE UNITS: 17



MASTER BEDROOM 01	20.1 M ²
MASTER TOILET 01	4.3 M ²
BEDROOM 01	19.3 M ²
TOILET 01	3.8 M ²
LIVING / DINING	26.0 M ²
CORRIDORS	2.4 M ²
KITCHEN / LAUNDRY	8.3 M ²
LOBBY	1.5 M ²

TOTAL FAMILY AREA
85.7 M²

TOTAL GROSS AREA
100-105 M²



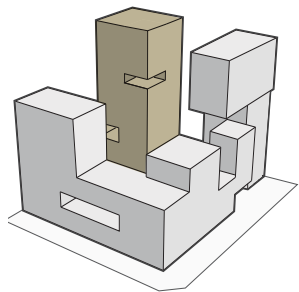
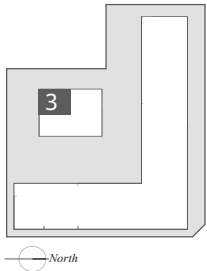
Disclaimer: 1. All room dimensions are measured to structural elements and include wall finishes and construction tolerances. 2. All dimensions have been provided by our consultant architects. 3. All materials, dimensions, and drawings are approximate. Information is subject to change without notice. 4. Actual apartment area may vary from the stated area. Drawings not to scale. The developers reserve the right to make revisions. 6. Calculation of balcony area is measured as the area bounded by the finish to finish demising or partition walls separating one unit from another unit, the outmost face of the enclosing guard and the external face of the unit adjoining the balcony. 7. The units are measured at typical floor in the building. Columns may vary in size depending on the floor level.

APARTMENT TYPE 3 | TWO BEDROOM APARTMENT



APARTMENT LOCATION:
BLOCK: E
LEVELS: 4-20

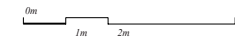
APARTMENT FEATURES
-ENTRANCES: 1
-NO. BEDROOMS: 2
-NO. TOILETS: 2
-NO. PARKING SPOTS: 1
-NO. OF AVAILABLE UNITS: 17



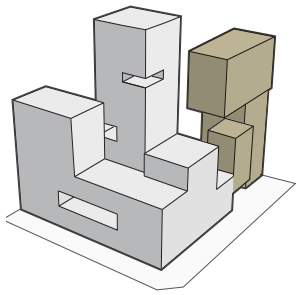
MASTER BEDROOM 01	18.0 M ²
MASTER TOILET	4.8 M ²
BEDROOM	15.5 M ²
GUEST TOILET	3.3 M ²
LIVING	20.6 M ²
KITCHEN / LAUNDRY	8.6 M ²
LOBBY	7.5 M ²

TOTAL FAMILY AREA
78.3 M²

TOTAL GROSS AREA
90 M²



Disclaimer : 1. All room dimensions are measured to structural elements and include wall finishes and construction tolerances. 2. All dimensions have been provided by our consultant architects. 3. All materials, dimensions, and drawings are approximate. Information is subject to change without notice. 4. Actual apartment area may vary from the stated area. Drawings not to scale. The developers reserve the right to make revisions. 6. Calculation of balcony area is measured as the area bounded by the finish to finish demising or partition walls separating one unit from another unit, the outmost face of the enclosing guard and the external face of the unit adjoining the balcony. 7. The units are measured at typical floor in the building. Columns may vary in size depending on the floor level.



BLOCK A

APARTMENTS



APARTMENT TYPE 4

FOUR BEDROOM DUPLEX + BALCONY

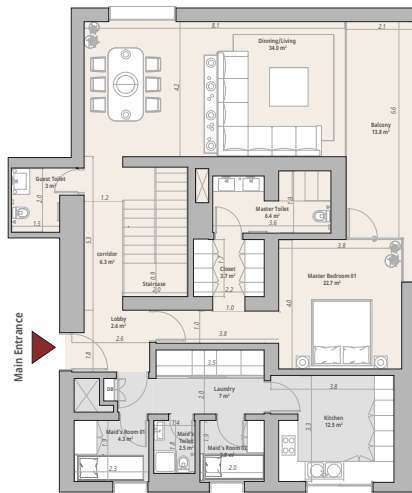
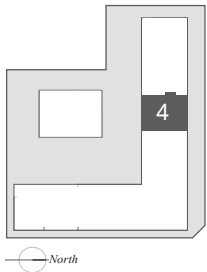


APARTMENT LOCATION

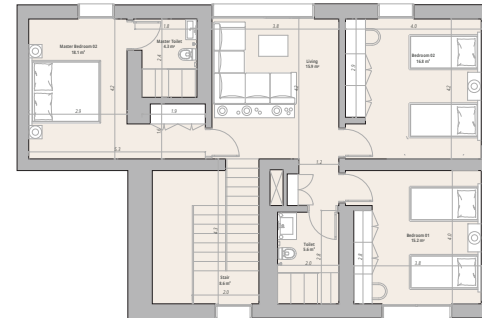
BLOCK: A
LEVELS: 13

APARTMENT FEATURES

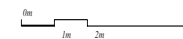
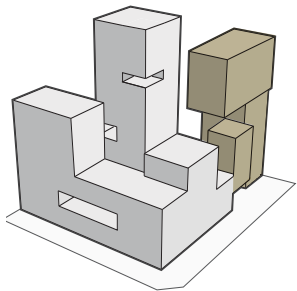
- ENTRANCES: 1
- NO. BEDROOMS: 4
- NO. TOILETS: 4
- NO.STAFF ROOMS: 2
- NO.STAFF TOILETS: 1
- NO.PARKING SPOTS: 3
- BALCONY
- LAUNDRY ROOM
- NO. OF AVAILABLE UNITS: 1



LOWER LEVEL
155 M²



UPPER LEVEL
110 M²



MASTER BEDROOM 01	-----	22.7 M ²
MASTER TOILET	-----	4.1 M ²
MASTER BEDROOM 02	-----	18.1 M ²
MASTER TOILET	-----	4.3 M ²
BEDROOM 01	-----	15.1 M ²
BEDROOM 02	-----	16.8 M ²
TOILET	-----	5.6 M ²
LIVING / DINING	-----	34.0 M ²
LIVING	-----	15.9 M ²
CORRIDOR + LOBBY	-----	8.9 M ²
GUEST TOILET	-----	3 M ²
BALCONY	-----	13.8 M ²

TOTAL FAMILY AREA
162.3 M²

MAID'S ROOM 01	-----	4.3 M ²
MAID'S ROOM 02	-----	3.8 M ²
MAID'S TOILET	-----	2.5 M ²
LAUNDRY	-----	7 M ²
KITCHEN	-----	12.5 M ²

TOTAL STAFF AREA
30 M²

TOTAL GROSS AREA
250 M²

Disclaimer: 1. All room dimensions are measured to structural elements and include wall finishes and construction tolerances. 2. All dimensions have been provided by our consultant architects. 3. All materials, dimensions, and drawings are approximate. Information is subject to change without notice. 4. Actual apartment area may vary from the stated area. Drawings not to scale. The developers reserve the right to make revisions. 6. Calculation of balcony area is measured as the area bounded by the finish to finish demising or partition walls separating one unit from another unit, the outmost face of the enclosing guard and the external face of the unit adjoining the balcony. 7. The units are measured at typical floor in the building. Columns may vary in size depending on the floor level.

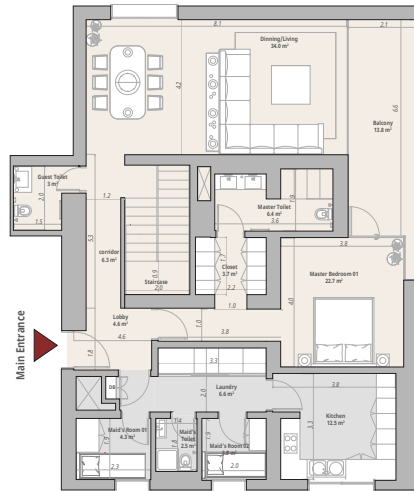
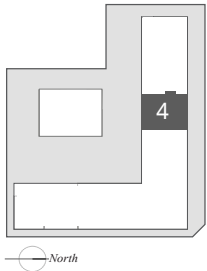
APARTMENT TYPE 4A | FOUR BEDROOM DUPLEX + TERRACE



APARTMENT LOCATION
BLOCK: A
LEVELS: 12&16

APARTMENT FEATURES

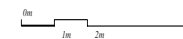
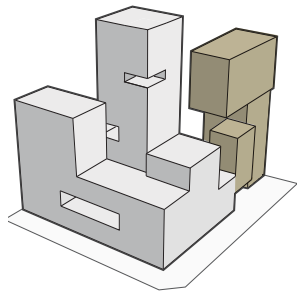
- ENTRANCES: 1
- NO. BEDROOMS: 4
- NO. TOILETS: 4
- NO.STAFF ROOMS: 2
- NO.STAFF TOILETS: 1
- NO.PARKING SPOTS: 3
- TERRACE IN LEVEL 12: 39.5 M²
- TERRACE IN LEVEL 16: 26 M²
- BALCONY: 13.8 M²
- LAUNDRY ROOM
- NO.OF AVAILABLE UNITS: 2



LOWER LEVEL
155 M²



UPPER LEVEL
150 M²



MASTER BEDROOM 01	-----
-----	22.7 M ²
MASTER TOILET	-----
-----	4.1 M ²
MASTER BEDROOM 02	-----
-----	18.1 M ²
MASTER TOILET	-----
-----	4.3 M ²
BEDROOM 01	-----
-----	15.1 M ²
BEDROOM 02	-----
-----	16.8 M ²
TOILET	-----
-----	5.6 M ²
LIVING / DINING	-----
-----	34.0 M ²
LIVING	-----
-----	15.9 M ²
CORRIDOR + LOBBY	-----
-----	8.9 M ²
GUEST TOILET	-----
-----	3 M ²
BALCONY+ TERRACE*	-----
-----	39.8-53.3 M ²

TOTAL FAMILY AREA
188.3 - 201.8 M²*

MAID'S ROOM 01	-----
-----	4.3 M ²
MAID'S ROOM 02	-----
-----	3.8 M ²
MAID'S TOILET	-----
-----	2.5 M ²
LAUNDRY	-----
-----	7 M ²
KITCHEN	-----
-----	12.5 M ²

TOTAL STAFF AREA
30 M²

TOTAL GROSS AREA
305 M²

Disclaimer: 1. All room dimensions are measured to structural elements and include wall finishes and construction tolerances. 2. All dimensions have been provided by our consultant architects. 3. All materials, dimensions, and drawings are approximate. Information is subject to change without notice. 4. Actual apartment area may vary from the stated area. Drawings not to scale. The developers reserve the right to make revisions. 6. Calculation of balcony area is measured as the area bounded by the finish to finish demising or partition walls separating one unit from another unit, the outmost face of the enclosing guard and the external face of the unit adjoining the balcony. 7. The units are measured at typical floor in the building. Columns may vary in size depending on the floor level.

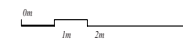
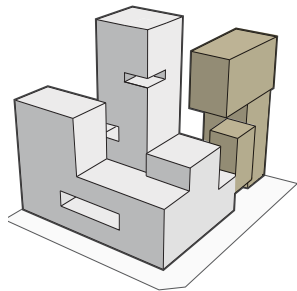
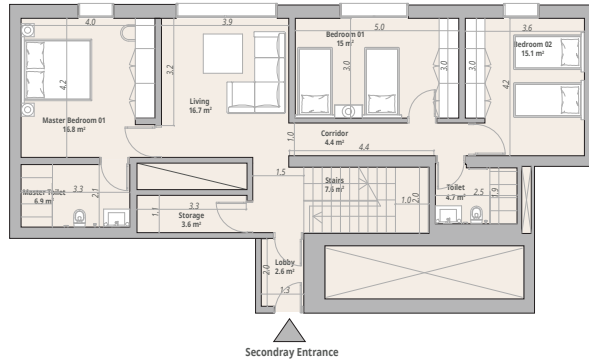
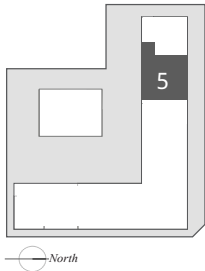
APARTMENT TYPE 5 | FOUR BEDROOM DUPLEX



APARTMENT LOCATION:
BLOCK: A
LEVELS: 11-16

APARTMENT FEATURES

- ENTRANCES: 2
- NO. BEDROOMS: 4
- NO. TOILETS: 4
- NO.STAFF ROOMS: 1
- NO.STAFF TOILETS: 1
- STORAGE ROOMS: 1
- NO.PARKING SPOTS: 3
- STORAGE ROOM
- LAUNDRY ROOM
- NO. OF AVAILABLE UNITS: 3



MASTER BEDROOM 01	-----	16.8 M ²
MASTER TOILET	-----	6.9 M ²
MASTER BEDROOM 02	-----	18.4 M ²
MASTER TOILET	-----	4.2 M ²
BEDROOM 01	-----	15.0 M ²
BEDROOM 02	-----	15.1 M ²
TOILET	-----	4.7 M ²
LIVING / DINING	-----	38.6 M ²
LIVING	-----	16.7 M ²
CORRIDORS	-----	21.6 M ²
GUEST TOILET	-----	1.9 M ²
STORAGE ROOM	-----	3.6 M ²

TOTAL FAMILY AREA

163.5 M²

MAID'S ROOM	-----	4.8 M ²
MAID'S TOILET	-----	2.7 M ²
CORRIDOR	-----	7.0 M ²
LAUNDRY	-----	8.1 M ²
KITCHEN	-----	17.3 M ²

TOTAL STAFF AREA

40 M²

TOTAL GROSS AREA

275-280 M²

Disclaimer : 1. All room dimensions are measured to structural elements and include wall finishes and construction tolerances. 2. All dimensions have been provided by our consultant architects. 3. All materials, dimensions, and drawings are approximate. Information is subject to change without notice. 4. Actual apartment area may vary from the stated area. Drawings not to scale. The developers reserve the right to make revisions. 6. Calculation of balcony area is measured as the area bounded by the finish to finish demising or partition walls separating one unit from another unit, the outmost face of the enclosing guard and the external face of the unit adjoining the balcony. 7. The units are measured at typical floor in the building. Columns may vary in size depending on the floor level.

APARTMENT TYPE 6

FOUR BEDROOM DUPLEX + BALCONY

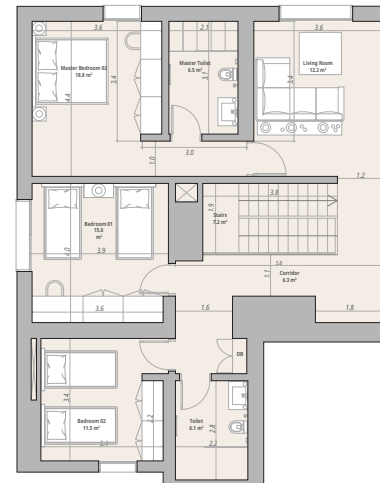
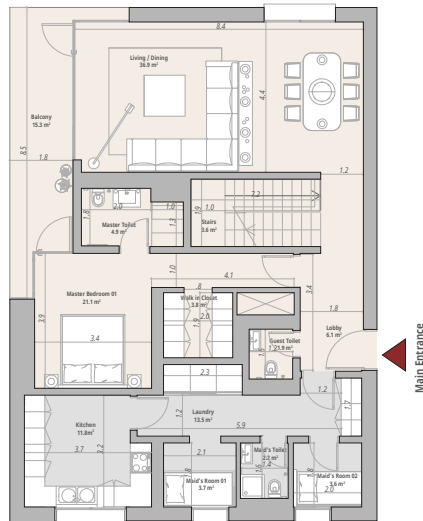
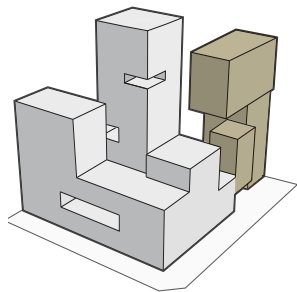
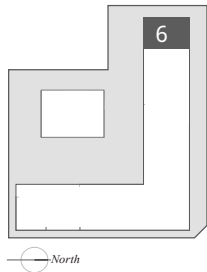


APARTMENT LOCATION:

BLOCK: A
LEVELS: 13

APARTMENT FEATURES

- ENTRANCES: 2
- NO. BEDROOMS: 4
- NO. TOILETS: 4
- NO.STAFF ROOMS: 2
- NO.STAFF TOILETS: 1
- NO.PARKING SPOTS: 3
- BALCONY
- LAUNDRY ROOM
- NO. OF AVAILABLE UNITS: 1



MASTER BEDROOM 01	-----	21.1 M ²
MASTER TOILET	-----	4.9 M ²
MASTER BEDROOM 02	-----	18.8 M ²
MASTER TOILET	-----	6.5 M ²
BEDROOM 01	-----	15.6 M ²
BEDROOM 02	-----	11.5 M ²
TOILET	-----	6.1 M ²
LIVING / DINING	-----	36.9 M ²
LIVING	-----	12.2 M ²
CORRIDORS	-----	15.7 M ²
GUEST TOILET	-----	1.9 M ²
BALCONY	-----	13.3 M ²

TOTAL FAMILY AREA

164.5 M²

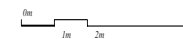
MAID'S ROOM 01	-----	3.7 M ²
MAID'S ROOM 02	-----	3.6 M ²
MAID'S TOILET	-----	2.2 M ²
LAUNDRY	-----	13.5 M ²
KITCHEN	-----	11.8 M ²

TOTAL STAFF AREA

34.8 M²

TOTAL GROSS AREA

250-255 M²



Disclaimer: 1. All room dimensions are measured to structural elements and include wall finishes and construction tolerances. 2. All dimensions have been provided by our consultant architects. 3. All materials, dimensions, and drawings are approximate. Information is subject to change without notice. 4. Actual apartment area may vary from the stated area. Drawings not to scale. The developers reserve the right to make revisions. 5. Calculation of balcony area is measured as the area bounded by the finish to finish demising or partition walls separating one unit from another unit, the outmost face of the enclosing guard and the external face of the unit adjoining the balcony. 7. The units are measured at typical floor in the building. Columns may vary in size depending on the floor level.

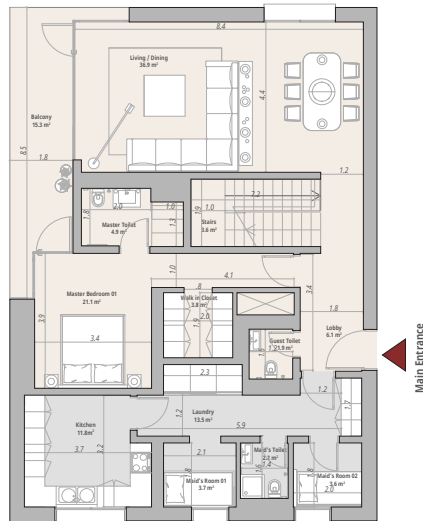
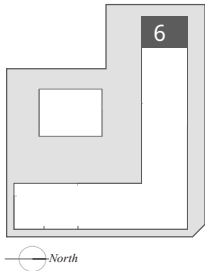
APARTMENT TYPE 6A | FOUR BEDROOM DUPLEX + BALCONY



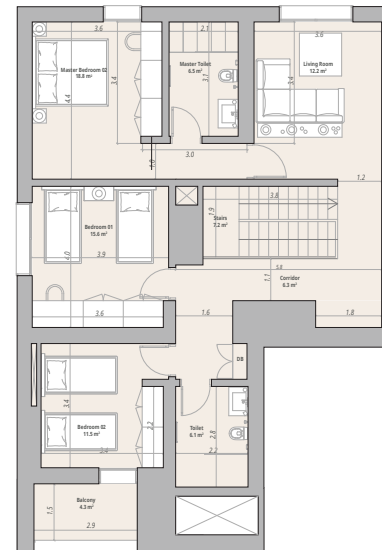
APARTMENT LOCATION:
BLOCK: A
LEVELS: 12&16

APARTMENT FEATURES

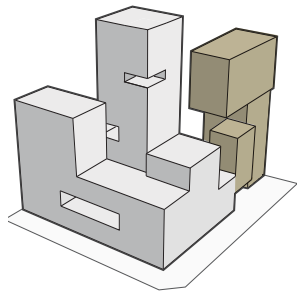
- ENTRANCES: 2
- NO. BEDROOMS: 4
- NO. TOILETS: 4
- NO.STAFF ROOMS: 2
- NO.STAFF TOILETS: 1
- NO.PARKING SPOTS: 3
- BALCONY IN LEVEL 12: 4.3 M²
- BALCONY IN LEVEL 16: 2.8 M²
- BALCONY: 15.3 M²
- LAUNDRY ROOM
- NO. OF AVAILABLE UNITS: 2



LOWER LEVEL
150 M²



UPPER LEVEL
110 M²



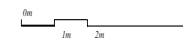
MASTER BEDROOM 01	-----	21.1 M ²
MASTER TOILET	-----	4.9 M ²
MASTER BEDROOM 02	-----	18.8 M ²
MASTER TOILET	-----	6.5 M ²
BEDROOM 01	-----	15.6 M ²
BEDROOM 02	-----	11.5 M ²
TOILET	-----	6.1 M ²
LIVING / DINING	-----	36.9 M ²
LIVING	-----	12.2 M ²
CORRIDORS	-----	15.7 M ²
GUEST TOILET	-----	1.9 M ²
BALCONIES*	-----	17.6 M ²
TOTAL FAMILY AREA	-----	164.8 - 168.8 M²*
MAID'S ROOM 01	-----	3.7 M ²
MAID'S ROOM 02	-----	3.6 M ²
MAID'S TOILET	-----	2.2 M ²
LAUNDRY	-----	13.5 M ²
KITCHEN	-----	11.8 M ²

TOTAL STAFF AREA

34.8 M²

TOTAL GROSS AREA

260 M²



Disclaimer: 1. All room dimensions are measured to structural elements and include wall finishes and construction tolerances. 2. All dimensions have been provided by our consultant architects. 3. All materials, dimensions, and drawings are approximate. Information is subject to change without notice. 4. Actual apartment area may vary from the stated area. Drawings not to scale. The developers reserve the right to make revisions. 5. Calculation of balcony area is measured as the area bounded by the finish to finish demising or partition walls separating one unit from another unit, the outmost face of the enclosing guard and the external face of the unit adjoining the balcony. 7. The units are measured at typical floor in the building. Columns may vary in size depending on the floor level.

APARTMENT TYPE 7

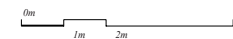
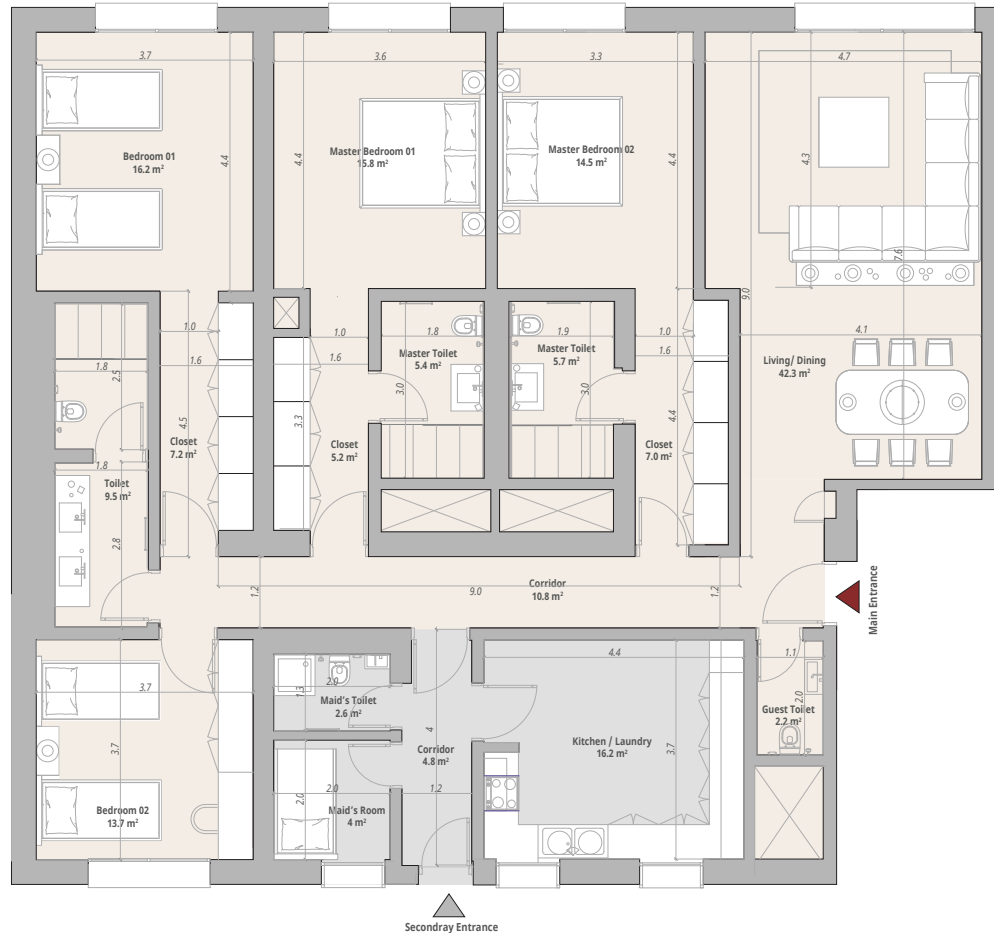
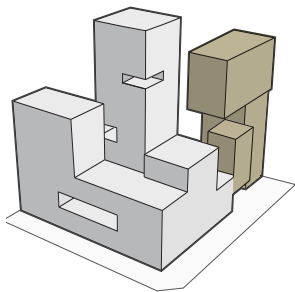
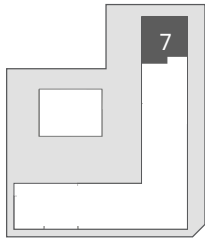
FOUR BEDROOM APARTMENT



APARTMENT LOCATION:
BLOCK: A
LEVELS: 1-10

APARTMENT FEATURES

- ENTRANCES: 2
- NO. BEDROOMS: 4
- NO. TOILETS: 4
- NO.STAFF ROOMS: 1
- NO.STAFF TOILETS: 1
- NO.PARKING SPOTS: 2
- NO. OF AVAILABLE UNITS: 9



MASTER BEDROOM 01	21.0 M ²
MASTER TOILET 02	5.4 M ²
MASTER BEDROOM 02	21.5 M ²
MASTER TOILET 01	5.7 M ²
BEDROOM 01	23.4 M ²
BEDROOM 02	13.7 M ²
TOILET	9.5 M ²
LIVING / DINING	42.3 M ²
CORRIDORS	10.8 M ²
GUEST TOILET	2.2 M ²

TOTAL FAMILY AREA
155.5 M²

MAID'S ROOM	4 M ²
MAID'S TOILET	2.6 M ²
CORRIDOR	4.8 M ²
KITCHEN / LAUNDRY	16.2 M ²

TOTAL STAFF AREA
27.6 M²

TOTAL GROSS AREA
215-220 M²

Disclaimer: 1. All room dimensions are measured to structural elements and include wall finishes and construction tolerances. 2. All dimensions have been provided by our consultant architects. 3. All materials, dimensions, and drawings are approximate. Information is subject to change without notice. 4. Actual apartment area may vary from the stated area. Drawings not to scale. The developers reserve the right to make revisions. 6. Calculation of balcony area is measured as the area bounded by the finish to finish demising or partition walls separating one unit from another unit, the outmost face of the enclosing guard and the external face of the unit adjoining the balcony. 7. The units are measured at typical floor in the building. Columns may vary in size depending on the floor level.

APARTMENT TYPE 7A | FOUR BEDROOM APARTMENT+TERRACE

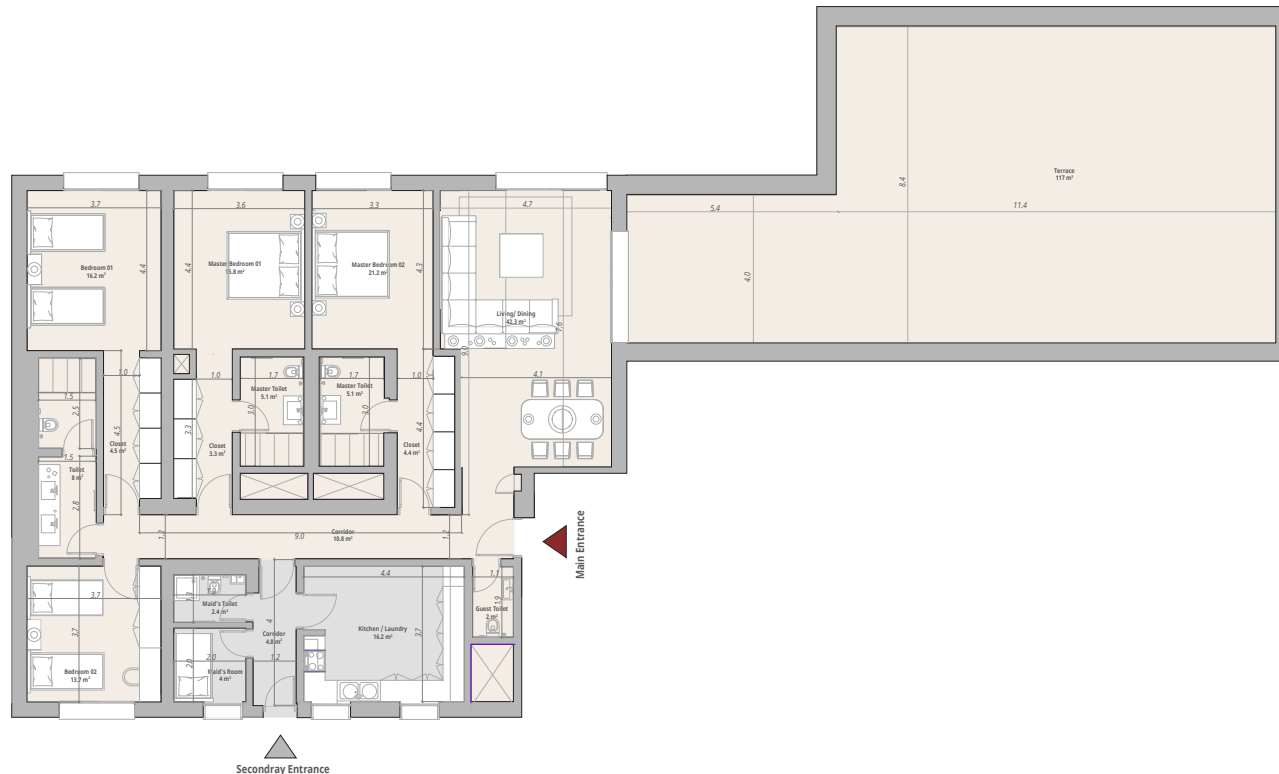
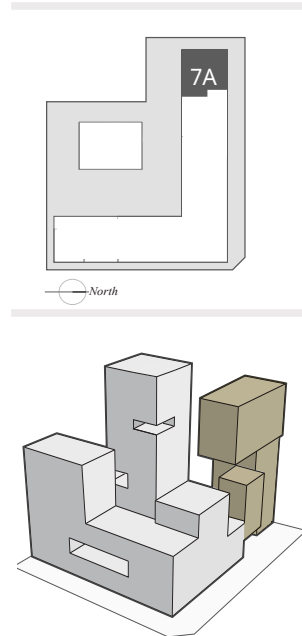


APARTMENT LOCATION:

BLOCK: A
LEVELS: 8

APARTMENT FEATURES

- ENTRANCES: 2
- NO. BEDROOMS: 4
- NO. TOILETS: 4
- NO.STAFF ROOMS: 1
- NO.STAFF TOILETS: 1
- TERRACE
- NO.PARKING SPOTS: 2
- NO. OF AVAILABLE UNITS: 1



MASTER BEDROOM 01	-----	21.0 M ²
MASTER TOILET 02	-----	5.1 M ²
MASTER BEDROOM 02	-----	21.2 M ²
MASTER TOILET 01	-----	5.1 M ²
BEDROOM 01	-----	23.4 M ²
BEDROOM 02	-----	13.7 M ²
TOILET	-----	8.0 M ²
LIVING / DINING	-----	42.3 M ²
CORRIDORS	-----	10.8 M ²
GUEST TOILET	-----	2 M ²
TERRACE	-----	117 M ²

TOTAL FAMILY AREA

269.6 M²

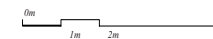
MAID'S ROOM	-----	4 M ²
MAID'S TOILET	-----	2.4 M ²
CORRIDOR	-----	4.8 M ²
KITCHEN / LAUNDRY	-----	16.2 M ²

TOTAL STAFF AREA

27.4 M²

TOTAL GROSS AREA

330 M²



Disclaimer: 1. All room dimensions are measured to structural elements and include wall finishes and construction tolerances. 2. All dimensions have been provided by our consultant architects. 3. All materials, dimensions, and drawings are approximate. Information is subject to change without notice. 4. Actual apartment area may vary from the stated area. Drawings not to scale. The developers reserve the right to make revisions. 6. Calculation of balcony area is measured as the area bounded by the finish to finish demising or partition walls separating one unit from another unit, the outmost face of the enclosing guard and the external face of the unit adjoining the balcony. 7. The units are measured at typical floor in the building. Columns may vary in size depending on the floor level.

APARTMENT TYPE 8

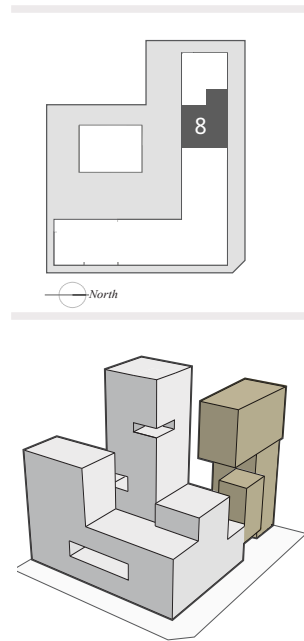
FOUR BEDROOM APARTMENT



APARTMENT LOCATION:
BLOCK: A
LEVELS: 3-7

APARTMENT FEATURES

- ENTRANCES: 2
- NO. BEDROOMS: 4
- NO. TOILETS: 4
- NO.STAFF ROOMS: 1
- NO.STAFF TOILETS: 1
- NO.PARKING SPOTS: 2
- NO. OF AVAILABLE UNITS: 5



MASTER BEDROOM 01	-----	20.3 M ²
MASTER TOILET 01	-----	6.4 M ²
MASTER BEDROOM 02	-----	14.4 M ²
MASTER TOILET 02	-----	6.5 M ²
BEDROOM 01	-----	14.4 M ²
BEDROOM 02	-----	14.3 M ²
TOILET	-----	4.3 M ²
WALK IN CLOSET	-----	10.2 M ²
LIVING / DINING	-----	33.4 M ²
CORRIDOR	-----	8.8 M ²
GUEST TOILET	-----	2.7 M ²
LOBBY	-----	4.5 M ²

TOTAL FAMILY AREA

140.3 M²

MAID'S ROOM	-----	4.4 M ²
MAID'S TOILET	-----	2.6 M ²
CORRIDOR	-----	4.8 M ²
KITCHEN / LAUNDRY	-----	13.6 M ²

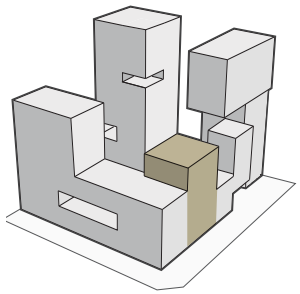
TOTAL STAFF AREA

25.4 M²

TOTAL GROSS AREA

200 M²

Disclaimer: 1. All room dimensions are measured to structural elements and include wall finishes and construction tolerances. 2. All dimensions have been provided by our consultant architects. 3. All materials, dimensions, and drawings are approximate. Information is subject to change without notice. 4. Actual apartment area may vary from the stated area. Drawings not to scale. The developers reserve the right to make revisions. 6. Calculation of balcony area is measured as the area bounded by the finish to finish demising or partition walls separating one unit from another unit, the outmost face of the enclosing guard and the external face of the unit adjoining the balcony. 7. The units are measured at typical floor in the building. Columns may vary in size depending on the floor level.



BLOCK B

APARTMENTS



APARTMENT TYPE 9

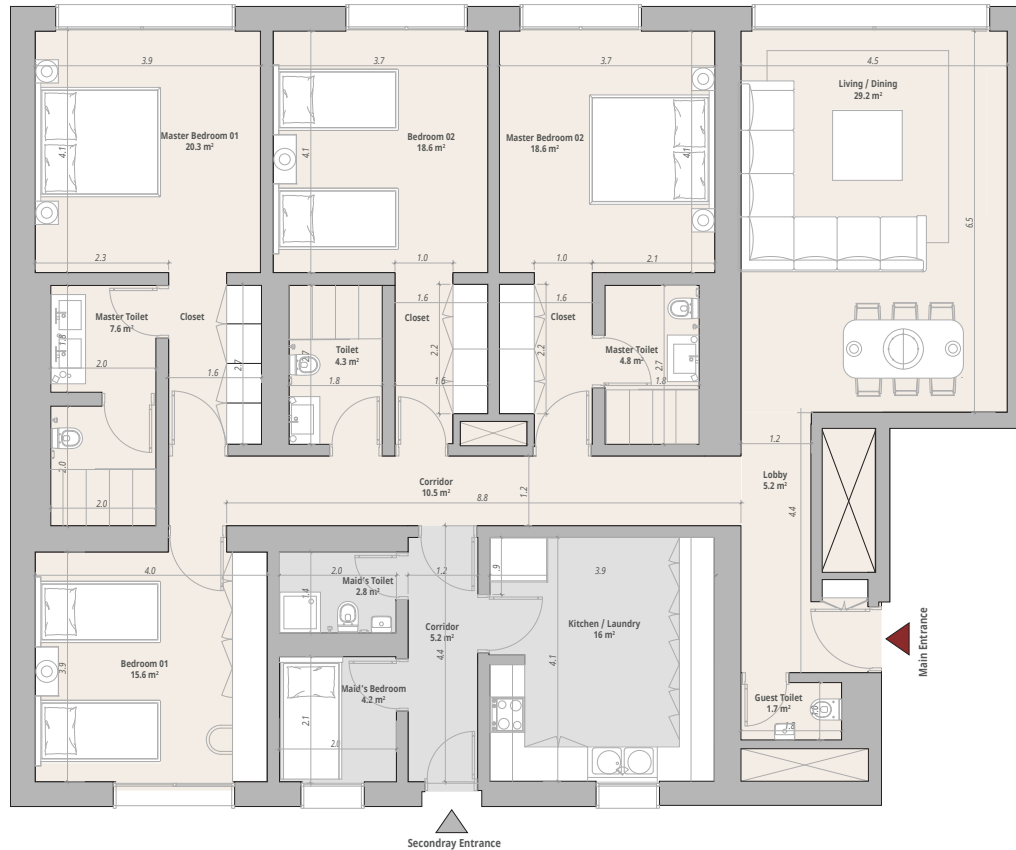
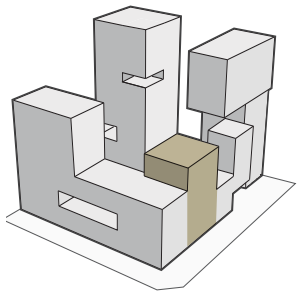
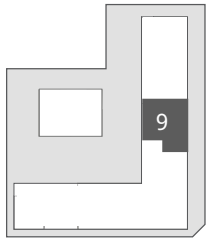
FOUR BEDROOM APARTMENT



APARTMENT LOCATION:
BLOCK: B
LEVELS: 1-4

APARTMENT FEATURES

- ENTRANCES: 2
- NO. BEDROOMS: 4
- NO. TOILETS: 4
- NO.STAFF ROOMS: 1
- NO.STAFF TOILETS: 1
- NO.PARKING SPOTS: 2
- NO. OF AVAILABLE UNITS: 4



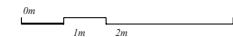
MASTER BEDROOM 01	-----	20.3 M ²
MASTER TOILET 01	-----	7.6 M ²
MASTER BEDROOM 02	-----	18.6 M ²
MASTER TOILET 02	-----	4.8 M ²
BEDROOM 01	-----	15.6 M ²
BEDROOM 02	-----	18.6 M ²
TOILET	-----	4.3 M ²
LIVING / DINING	-----	29.2 M ²
CORRIDORS	-----	31.1 M ²
GUEST TOILET	-----	2 M ²
LOBBY	-----	5.2 M ²

TOTAL FAMILY AREA
157.3 M²

MAID'S ROOM	-----	4.2 M ²
MAID'S TOILET	-----	2.8 M ²
CORRIDOR	-----	5.2 M ²
KITCHEN / LAUNDRY	-----	16.0 M ²

TOTAL STAFF AREA
28.2 M²

TOTAL GROSS AREA
205 M²



Disclaimer: 1. All room dimensions are measured to structural elements and include wall finishes and construction tolerances. 2. All dimensions have been provided by our consultant architects. 3. All materials, dimensions, and drawings are approximate. Information is subject to change without notice. 4. Actual apartment area may vary from the stated area. Drawings not to scale. The developers reserve the right to make revisions. 6. Calculation of balcony area is measured as the area bounded by the finish to finish demising or partition walls separating one unit from another unit, the outmost face of the enclosing guard and the external face of the unit adjoining the balcony. 7. The units are measured at typical floor in the building. Columns may vary in size depending on the floor level.

APARTMENT TYPE 10 | FOUR BEDROOM APARTMENT



APARTMENT LOCATION:
BLOCK: B
LEVELS: 1-6

- APARTMENT FEATURES**
- ENTRANCES: 2
 - NO. BEDROOMS: 4
 - NO. TOILETS: 4
 - NO.STAFF ROOMS: 1
 - NO.STAFF TOILETS: 1
 - NO.PARKING SPOTS: 2
 - NO. OF AVAILABLE UNITS: 6



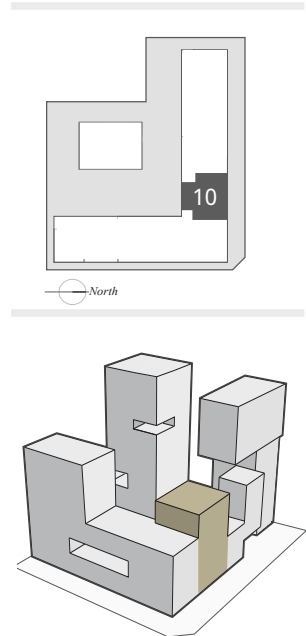
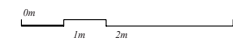
MASTER BEDROOM 01	16 M ²
MASTER TOILET 01	4.8 M ²
MASTER BEDROOM 02	22.9 M ²
MASTER TOILET 02	5.4 M ²
BEDROOM 01	21.4 M ²
BEDROOM 02	13.2 M ²
TOILET	9.5 M ²
LIVING / DINING	32.5 M ²
CORRIDORS	20.8 M ²
GUEST TOILET	1.6 M ²
LOBBY	5.7 M ²

TOTAL FAMILY AREA
153.8 M²

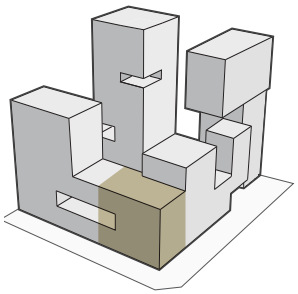
MAID'S ROOM	4.4 M ²
MAID'S TOILET	3.2 M ²
CORRIDOR	5 M ²
KITCHEN / LAUNDRY	14.0 M ²

TOTAL STAFF AREA
26.6 M²

TOTAL GROSS AREA
205 M²



Disclaimer: 1. All room dimensions are measured to structural elements and include wall finishes and construction tolerances. 2. All dimensions have been provided by our consultant architects. 3. All materials, dimensions, and drawings are approximate. Information is subject to change without notice. 4. Actual apartment area may vary from the stated area. Drawings not to scale. The developers reserve the right to make revisions. 5. Calculation of balcony area is measured as the area bounded by the finish to finish demising or partition walls separating one unit from another unit, the outmost face of the enclosing guard and the external face of the unit adjoining the balcony. 7. The units are measured at typical floor in the building. Columns may vary in size depending on the floor level.



BLOCK C

APARTMENTS

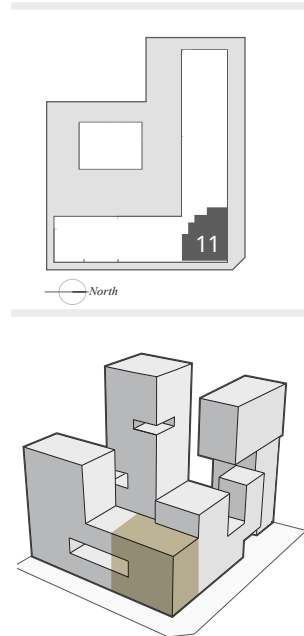


APARTMENT TYPE 11 | FOUR BEDROOM APARTMENT



APARTMENT LOCATION:
BLOCK: C
LEVELS: 1-6

- APARTMENT FEATURES**
- ENTRANCES: 1
 - NO. BEDROOMS: 4
 - NO. TOILETS: 4
 - NO.STAFF ROOMS: 1
 - NO.STAFF TOILETS: 1
 - NO.PARKING SPOTS: 2
 - LAUNDRY ROOM
 - NO. OF AVAILABLE UNITS: 6



MASTER BEDROOM 01	18.3 M ²
MASTER TOILET 01	5.8 M ²
MASTER BEDROOM 02	20.5 M ²
MASTER TOILET 02	4.8 M ²
BEDROOM 01	19.5 M ²
BEDROOM 02	16.8 M ²
TOILET	6.6 M ²
LIVING / DINING	39.1 M ²
CORRIDORS	17.7 M ²
GUEST TOILET	3 M ²
LOBBY	4.8 M ²

TOTAL FAMILY AREA
156.9 M²

MAID'S ROOM	4.8 M ²
MAID'S TOILET	2.2 M ²
CORRIDOR	5.5 M ²
LAUNDRY	6.8 M ²
KITCHEN	11.2 M ²

TOTAL STAFF AREA
30.5 M²

TOTAL GROSS AREA
225 M²

Disclaimer: 1. All room dimensions are measured to structural elements and include wall finishes and construction tolerances. 2. All dimensions have been provided by our consultant architects. 3. All materials, dimensions, and drawings are approximate. Information is subject to change without notice. 4. Actual apartment area may vary from the stated area. Drawings not to scale. The developers reserve the right to make revisions. 5. Calculation of balcony area is measured as the area bounded by the finish to finish demising or partition walls separating one unit from another unit, the outmost face of the enclosing guard and the external face of the unit adjoining the balcony. 7. The units are measured at typical floor in the building. Columns may vary in size depending on the floor level.

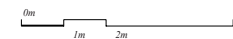
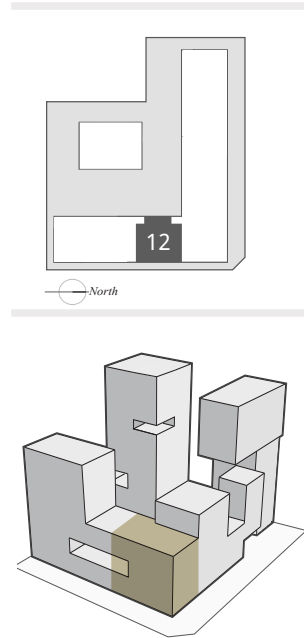
APARTMENT TYPE 12 | FOUR BEDROOM APARTMENT



APARTMENT LOCATION:
BLOCK: C
LEVELS: 1-6

APARTMENT FEATURES

- ENTRANCES: 2
- NO. BEDROOMS: 4
- NO. TOILETS: 4
- NO. STAFF ROOMS: 1
- NO. STAFF TOILETS: 1
- NO. PARKING SPOTS: 2
- NO. OF AVAILABLE UNITS: 4



MASTER BEDROOM 01	17.6 M ²
MASTER TOILET 01	4.9 M ²
MASTER BEDROOM 02	18.4 M ²
MASTER TOILET 02	4.9 M ²
BEDROOM 01	12.3 M ²
BEDROOM 02	21.5 M ²
TOILET	7.8 M ²
LIVING / DINING	40 M ²
CORRIDORS	13.9 M ²
GUEST TOILET	1.7 M ²
LOBBY	3.7 M ²

TOTAL FAMILY AREA

146.7 M²

MAID'S ROOM	4.3 M ²
MAID'S TOILET	3.0 M ²
CORRIDOR	4.9 M ²
KITCHEN / LAUNDRY	12.8 M ²

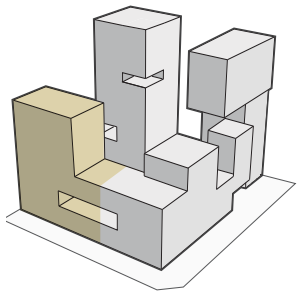
TOTAL STAFF AREA

25 M²

TOTAL GROSS AREA

200 M²

Disclaimer: 1. All room dimensions are measured to structural elements and include wall finishes and construction tolerances. 2. All dimensions have been provided by our consultant architects. 3. All materials, dimensions, and drawings are approximate. Information is subject to change without notice. 4. Actual apartment area may vary from the stated area. Drawings not to scale. The developers reserve the right to make revisions. 5. Calculation of balcony area is measured as the area bounded by the finish to finish demising or partition walls separating one unit from another unit, the outmost face of the enclosing guard and the external face of the unit adjoining the balcony. 7. The units are measured at typical floor in the building. Columns may vary in size depending on the floor level.



BLOCK D

APARTMENTS

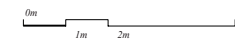
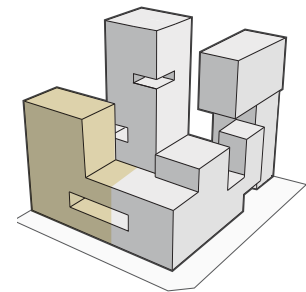
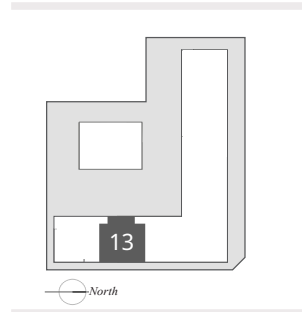


APARTMENT TYPE 13 | FOUR BEDROOM APARTMENT



APARTMENT LOCATION:
BLOCK: D
LEVELS: 1-6

- APARTMENT FEATURES**
- ENTRANCES: 2
 - NO. BED ROOMS: 4
 - NO. TOILETS: 4
 - NO.STAFF ROOMS: 1
 - NO.STAFF TOILETS: 1
 - NO.PARKING SPOTS: 2
 - NO. OF AVAILABLE UNITS: 4



MASTER BEDROOM 01	20.6 M ²
MASTER TOILET 01	4.8 M ²
MASTER BEDROOM 02	18.3 M ²
MASTER TOILET 02	4.9 M ²
BEDROOM 01	19.5 M ²
BEDROOM 02	11.8 M ²
TOILET	5.5 M ²
LIVING / DINING	38.2 M ²
CORRIDORS	11.5 M ²
GUEST TOILET	1.9 M ²
LOBBY	5 M ²

TOTAL FAMILY AREA

142 M²

MAID'S ROOM	7 M ²
MAID'S TOILET	3.4 M ²
CORRIDOR	4.9 M ²
KITCHEN / LAUNDRY	15.2 M ²

TOTAL STAFF AREA

30.5 M²

TOTAL GROSS AREA

205 M²

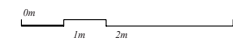
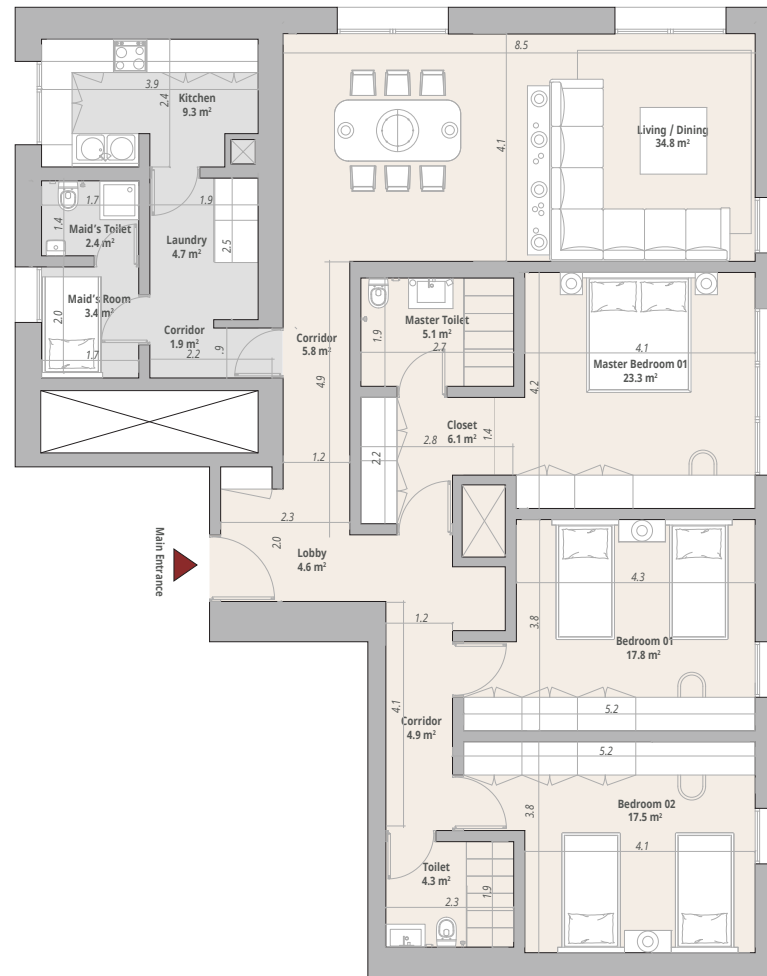
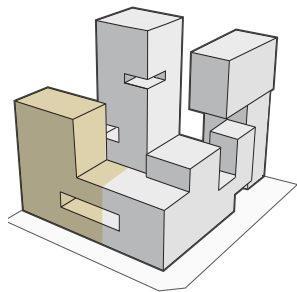
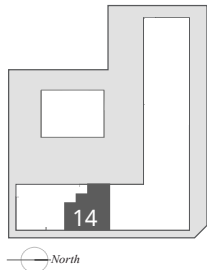
Disclaimer: 1. All room dimensions are measured to structural elements and include wall finishes and construction tolerances. 2. All dimensions have been provided by our consultant architects. 3. All materials, dimensions, and drawings are approximate. Information is subject to change without notice. 4. Actual apartment area may vary from the stated area. Drawings not to scale. The developers reserve the right to make revisions. 6. Calculation of balcony area is measured as the area bounded by the finish to finish demising or partition walls separating one unit from another unit, the outmost face of the enclosing guard and the external face of the unit adjoining the balcony. 7. The units are measured at typical floor in the building. Columns may vary in size depending on the floor level.

APARTMENT TYPE 14 | THREE BEDROOM APARTMENT



APARTMENT LOCATION:
BLOCK: D
LEVELS: 8-12

- APARTMENT FEATURES**
- ENTRANCES: 1
 - NO. BEDROOMS: 3
 - NO. TOILETS: 2
 - NO.STAFF ROOMS: 1
 - NO.STAFF TOILETS: 1
 - NO.PARKING SPOTS: 2
 - NO. OF AVAILABLE UNITS: 5



MASTER BEDROOM 01	23.3 M ²
MASTER TOILET 01	5.1 M ²
BEDROOM 01	17.8 M ²
BEDROOM 02	17.5 M ²
TOILET	4.3 M ²
LIVING / DINING	34.8 M ²
CORRIDORS	10.7 M ²
LOBBY	4.6 M ²

TOTAL FAMILY AREA
118.2 M²

MAID'S ROOM	3.4 M ²
MAID'S TOILET	2.4 M ²
CORRIDOR	1.9 M ²
LAUNDRY	4.7 M ²
KITCHEN	9.3 M ²

TOTAL STAFF AREA
21.7 M²

TOTAL GROSS AREA
170 M²

Disclaimer: 1. All room dimensions are measured to structural elements and include wall finishes and construction tolerances. 2. All dimensions have been provided by our consultant architects. 3. All materials, dimensions, and drawings are approximate. Information is subject to change without notice. 4. Actual apartment area may vary from the stated area. Drawings not to scale. The developers reserve the right to make revisions. 6. Calculation of balcony area is measured as the area bounded by the finish to finish demising or partition walls separating one unit from another unit, the outmost face of the enclosing guard and the external face of the unit adjoining the balcony. 7. The units are measured at typical floor in the building. Columns may vary in size depending on the floor level.

APARTMENT TYPE 14A

THREE BEDROOM APARTMENT + TERRACE

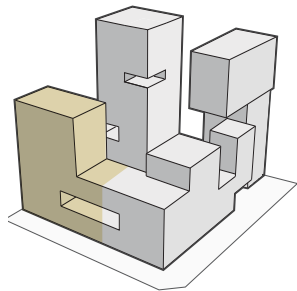
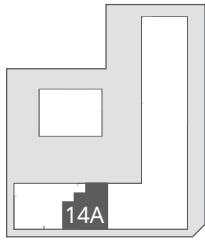


APARTMENT LOCATION:

BLOCK: D
LEVELS: 7

APARTMENT FEATURES

- ENTRANCES: 1
- NO. BEDROOMS: 3
- NO. TOILETS: 2
- NO.STAFF ROOMS: 1
- NO.STAFF TOILETS: 1
- NO.PARKING SPOTS: 2
- TERRACE
- NO. OF AVAILABLE UNITS: 1



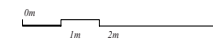
MASTER BEDROOM 01	23.3 M ²
MASTER TOILET 01	5.1 M ²
BEDROOM 01	17.8 M ²
BEDROOM 02	17.5 M ²
TOILET	4.3 M ²
LIVING / DINING	34.8 M ²
CORRIDORS	10.7 M ²
LOBBY	4.6 M ²
TERRACE	27.7 M ²

TOTAL FAMILY AREA
145.8 M²

MAID'S ROOM	3.4 M ²
MAID'S TOILET	2.4 M ²
CORRIDOR	1.9 M ²
LAUNDRY	4.7 M ²
KITCHEN	9.3 M ²

TOTAL STAFF AREA
21.7 M²

TOTAL GROSS AREA
200 M²



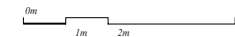
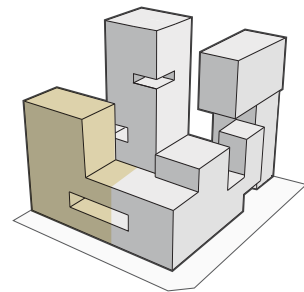
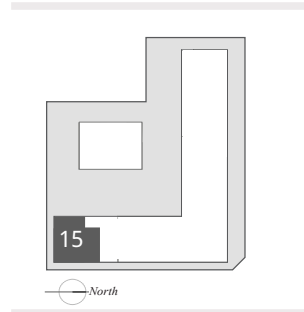
Disclaimer: 1. All room dimensions are measured to structural elements and include wall finishes and construction tolerances. 2. All dimensions have been provided by our consultant architects. 3. All materials, dimensions, and drawings are approximate. Information is subject to change without notice. 4. Actual apartment area may vary from the stated area. Drawings not to scale. The developers reserve the right to make revisions. 5. Calculation of balcony area is measured as the area bounded by the finish to finish demising or partition walls separating one unit from another unit, the outmost face of the enclosing guard and the external face of the unit adjoining the balcony. 7. The units are measured at typical floor in the building. Columns may vary in size depending on the floor level.

APARTMENT TYPE 15 | FOUR BEDROOM APARTMENT



APARTMENT LOCATION:
BLOCK: D
LEVELS: 1-6

- APARTMENT FEATURES**
- ENTRANCES: 2
 - NO. BEDROOMS: 4
 - NO. TOILETS: 4
 - NO.STAFF ROOMS: 1
 - NO.STAFF TOILETS: 1
 - NO.PARKING SPOTS: 2
 - NO. OF AVAILABLE UNITS: 6



MASTER BEDROOM 01	18.3 M ²
MASTER TOILET 01	4.8 M ²
MASTER BEDROOM 02	19.7 M ²
MASTER TOILET 02	4.6 M ²
BEDROOM 01	14.8 M ²
BEDROOM 02	19.8 M ²
TOILET	7 M ²
LIVING / DINING	40 M ²
CORRIDORS	6.7 M ²
GUEST TOILET	1.8 M ²
LOBBY	3.5 M ²

TOTAL FAMILY AREA

141 M²

MAID'S ROOM	4.2 M ²
MAID'S TOILET	2.6 M ²
CORRIDOR	4.9 M ²
KITCHEN/ LAUNDRY	12 M ²

TOTAL STAFF AREA

23.7 M²

TOTAL GROSS AREA

200 M²

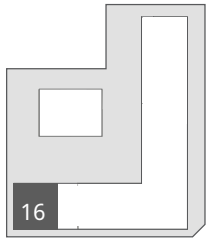
Disclaimer: 1. All room dimensions are measured to structural elements and include wall finishes and construction tolerances. 2. All dimensions have been provided by our consultant architects. 3. All materials, dimensions, and drawings are approximate. Information is subject to change without notice. 4. Actual apartment area may vary from the stated area. Drawings not to scale. The developers reserve the right to make revisions. 5. Calculation of balcony area is measured as the area bounded by the finish to finish demising or partition walls separating one unit from another unit, the outmost face of the enclosing guard and the external face of the unit adjoining the balcony. 7. The units are measured at typical floor in the building. Columns may vary in size depending on the floor level.

APARTMENT TYPE 16 | THREE BEDROOM APARTMENT

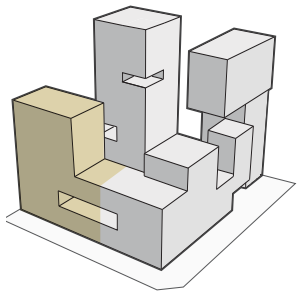


APARTMENT LOCATION:
BLOCK: D
LEVELS: 7-12

- APARTMENT FEATURES**
- ENTRANCES: 2
 - NO. BEDROOMS: 3
 - NO. TOILETS: 3
 - NO.STAFF ROOMS: 1
 - NO.STAFF TOILETS: 1
 - NO.PARKING SPOTS: 2
 - NO. OF AVAILABLE UNITS: 6



North



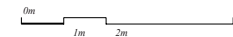
MASTER BEDROOM 01	18.9 M ²
MASTER TOILET 01	4.8 M ²
BEDROOM 01	15.2 M ²
BEDROOM 02	18.9 M ²
TOILET	7 M ²
LIVING / DINING	40 M ²
CORRIDOR	6.7 M ²
GUEST TOILET	1.9 M ²
LOBBY	3.5 M ²

TOTAL FAMILY AREA
116.8 M²

MAID'S ROOM	4.2 M ²
MAID'S TOILET	2.6 M ²
CORRIDOR	5.5 M ²
KITCHEN/LAUNDRY	12 M ²

TOTAL STAFF AREA
24.3 M²

TOTAL GROSS AREA
170 M²



Disclaimer: 1. All room dimensions are measured to structural elements and include wall finishes and construction tolerances. 2. All dimensions have been provided by our consultant architects. 3. All materials, dimensions, and drawings are approximate. Information is subject to change without notice. 4. Actual apartment area may vary from the stated area. Drawings not to scale. The developers reserve the right to make revisions. 5. Calculation of balcony area is measured as the area bounded by the finish to finish demising or partition walls separating one unit from another unit, the outmost face of the enclosing guard and the external face of the unit adjoining the balcony. 7. The units are measured at typical floor in the building. Columns may vary in size depending on the floor level.

PARKING DISTRIBUTION



PARKING

STREET-SIDE VISITOR PARKING:
38 PARKING SPOT

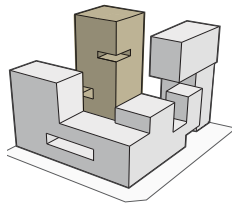
GROUND FLOOR (INTERNAL):
36 PARKING SPOTS

BASEMENT 1:
76 PARKING SPOTS

BASEMENT 2:
115 PARKING SPOTS

TOTAL NUMBER OF PARKING SPOTS: 265

BLOCK E APARTMENTS



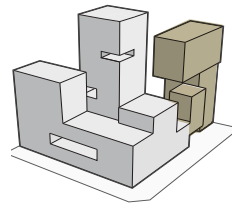
2 BEDROOM APARTMENTS

TYPE 2 — 1 PARKING
TYPE 3 — 1 PARKING

3 BEDROOM APARTMENTS

TYPE 1A — 2 PARKING
TYPE 1B — 2 PARKING

BLOCK A APARTMENTS



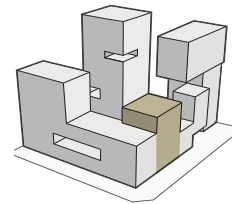
4 BEDROOM DUPLEXES

TYPE 4 — 3 PARKING
TYPE 4A — 3 PARKING
TYPE 5 — 3 PARKING
TYPE 6 — 3 PARKING
TYPE 6A — 3 PARKING

4 BEDROOM APARTMENTS

TYPE 7 — 2 PARKING
TYPE 7A — 2 PARKING
TYPE 8 — 2 PARKING

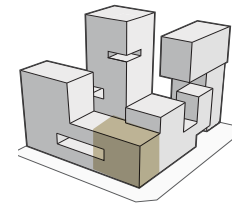
BLOCK B APARTMENTS



4 BEDROOM APARTMENTS

TYPE 9 — 2 PARKING
TYPE 10 — 2 PARKING

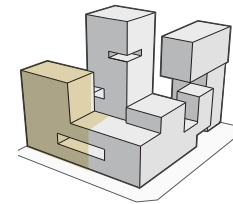
BLOCK C APARTMENTS



4 BEDROOM APARTMENTS

TYPE 11 — 2 PARKING
TYPE 12 — 2 PARKING

BLOCK D APARTMENTS

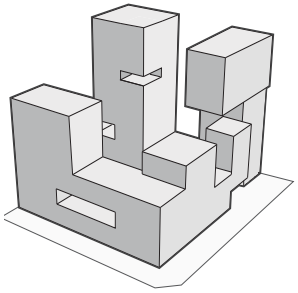


4 BEDROOM APARTMENTS

TYPE 13 — 2 PARKING
TYPE 15 — 2 PARKING

3 BEDROOM APARTMENTS

TYPE 14 — 2 PARKING
TYPE 14A — 2 PARKING
TYPE 16 — 2 PARKING



BUILDING
AMENITIES



BUILDING AMENITIES



2 GYMS

- MORE THAN 217 M² OF WORKOUT SPACE OVERLOOKING THE GARDEN TERRACES.
- FULLY EQUIPPED WITH RESULTS-ORIENTATED EQUIPMENT OF STRENGTH AND CARDIO.
- MALE & FEMALE GYMS.



SWIMMING POOLS & SQUASH COURT

- INCLUDING A 137 M² ADULTS POOL & 16 M² CHILDREN POOL.
- MALE & FEMALE CHANGING ROOMS & TOILETS.
- PROFESSIONAL SQUASH COURT FULLY EQUIPPED WITH SPECTATORS SEATS.

BUILDING AMENITIES



CHILDREN CLUB

- CHILDREN CLUB OFFERS A HOST OF AMUSEMENTS TO KEEP LITTLE ONES ENTERTAINED.
- STOCKED WITH A RANGE OF BRIGHTLY COLORED TOYS, BOOKS AND GAMES.



MULTI-PURPOSE HALL & LOUNGE AREA

- WAFRA LIVING LOUNGE IS A PUBLIC GATHERING AREA TO SIT, UNWIND AND SOCIALIZE.
- RESIDENCES IN WAFRA LIVING HAVE ACCESS TO THE MULTI-PURPOSE HALL THAT IS FULLY EQUIPPED WITH A KITCHENETTE, & MALE & FEMALE TOILETS.

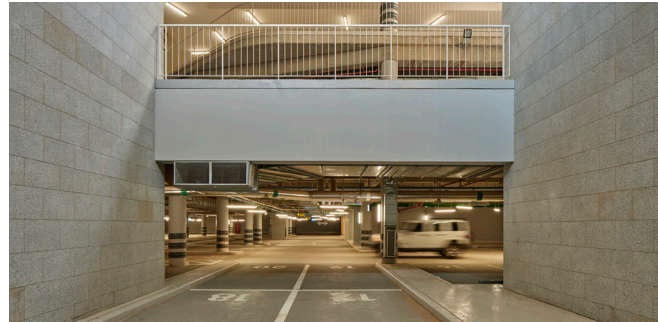


BUILDING AMENITIES



PARKING SPACES

- DESIGNATED PARKING SPACE(S) FOR EACH APARTMENT
- CAR WASH SERVICE
- CAR PARK ACCESS SYSTEM



GARDEN TERRACES

- 6 ACCESSIBLE GARDEN TERRACES EQUIPPED WITH BUILT-IN BENCHES.
- RESIDENCES CAN ENJOY VARIOUS BREATHTAKING VIEWS OF KUWAIT CITY.



APARTMENT AMENITIES



LIFT LOBBY

- DESIGNATED LIFT LOBBIES FOR EACH CORE
- CCTV SECURITY CAMERAS
- DESIGNATED DOOR BELL FOR EACH APARTMENT



FULLY EQUIPPED KITCHENS & TOILETS

- FULLY EQUIPPED KITCHENS WITH APPLIANCES
- TOILET WITH HIGH-END FINISHES



For further information about
Wafra Living
Please call:

(+965) 1841114

www.wafra.com.kw
info@wafra.com.kw

وفاة
wafra
Real Estate العقارية

